

October 2021 - September 2025
EU's Horizon 2020 program

¡Ven a bordo!
Monter à bord!
Venha a bordo!
Come onboard!



Presenting SEAWise at SWWAC

SEAWise has received funding from the European Union's Horizon 2020 research and innovation programme under grant agreement No 101000318



What's the aim?

Effective implementation of Ecosystem Based Fisheries Management in Europe

- Collaborative network
- Fully operational approach for stakeholders and policy makers
- Create tools and advice for collaborative management
- Consider environmental change and increasing competition for marine space



**Practical
insights.
Applicable
tools.
Ecosystem
based
management.**



The four key challenges Of SeaWise

1. Define end-user driven advice

2. Identify clear and widely accepted priorities

3. Fill Gaps in existing knowledge

4. Develop accurate and adaptive methods

The true experts on the usefulness of advice
are the recipients.



We need your input to
help us build a foundation
of knowledge, and target
our work on advice that is
meaningful to end users.



How will we address the challenges?

1.
Build a network of stakeholders

2.
Assemble a new knowledge base

3.
Collate, develop and integrate predictive models

4.
Provide ready-for-uptake advice



Western Waters Case Study

Seas? Gears? Species?

✓ NWWAC

- ◆ Irish Sea + Celtic Sea
- ◆ Otter and beam trawlers
- ◆ Small and large-scale fisheries
- ◆ Mostly mixed demersal fish: *Nephrops*, sole hake, haddock, cod, whiting, anglerfish, seabass, megrim...

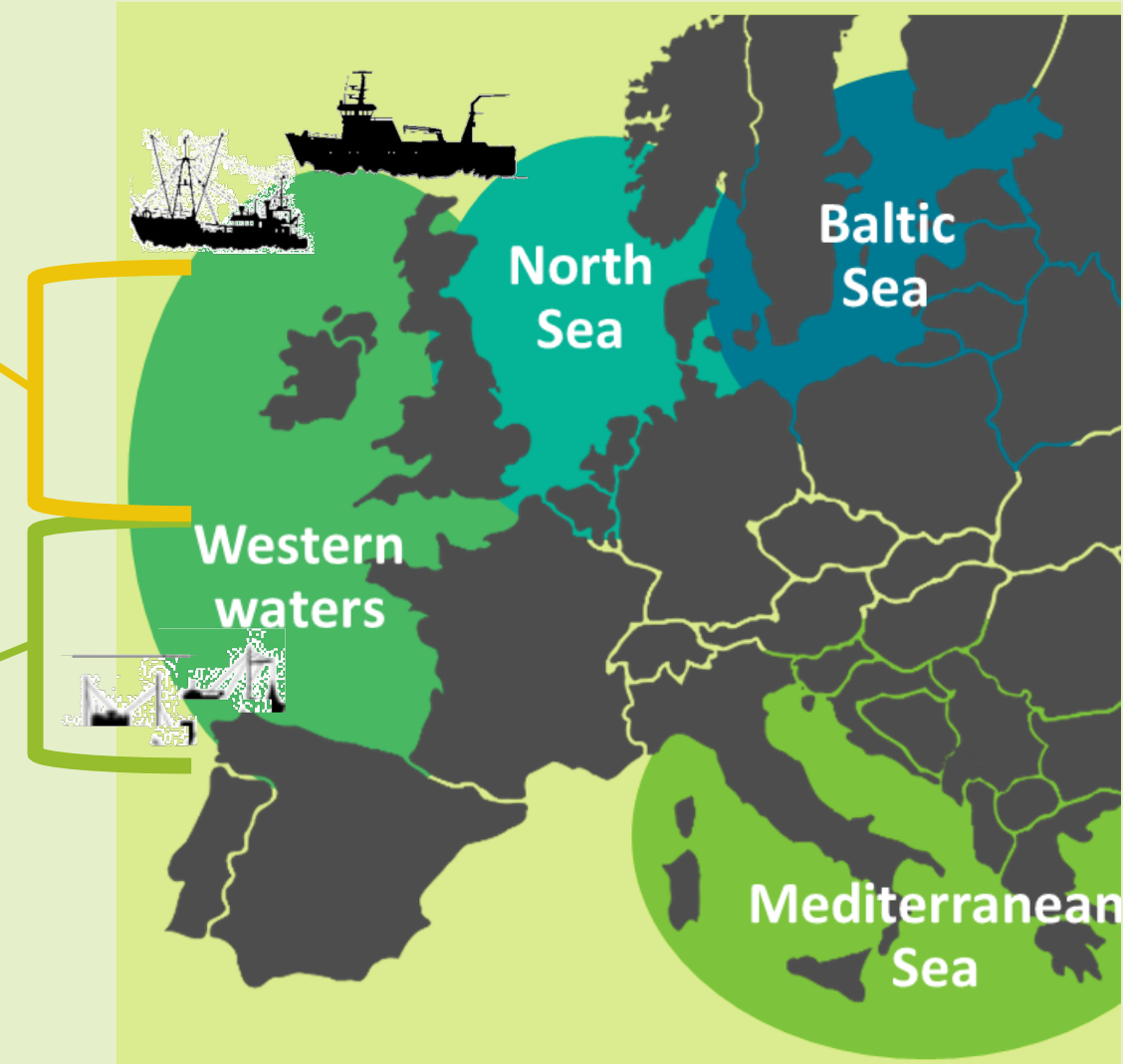


✓ SWWAC

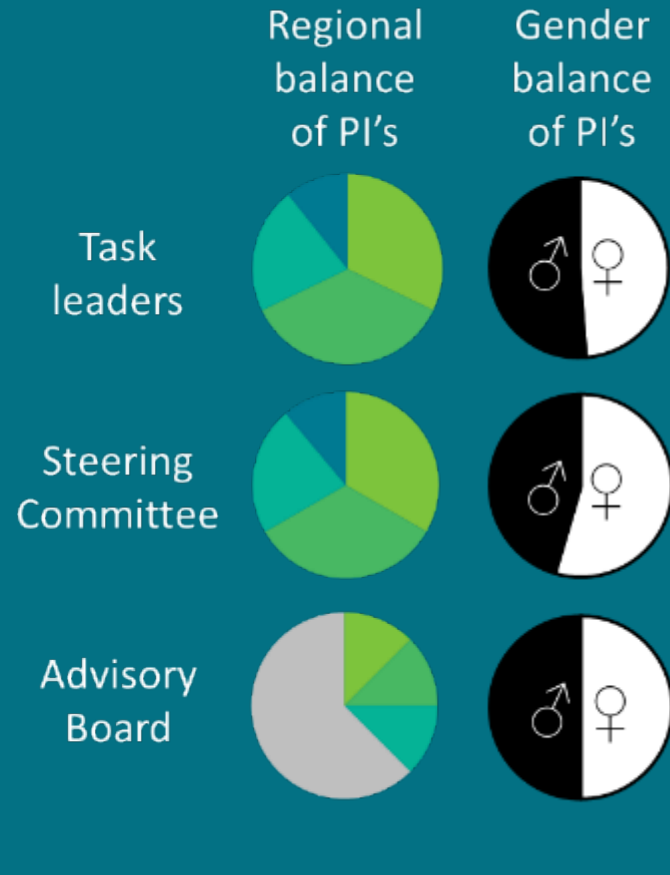
- ◆ Bay of Biscay + Iberian coast
- ◆ Longline, gill nets, purse seiners, trawlers
- ◆ Small-scale and large fisheries
- ◆ Seabass, hake, sole, anchovy, sardines...



✓ PELAC



24 partners. 8 mio €. 4 regions. 1 advisory board. 1 approach



Full Partners

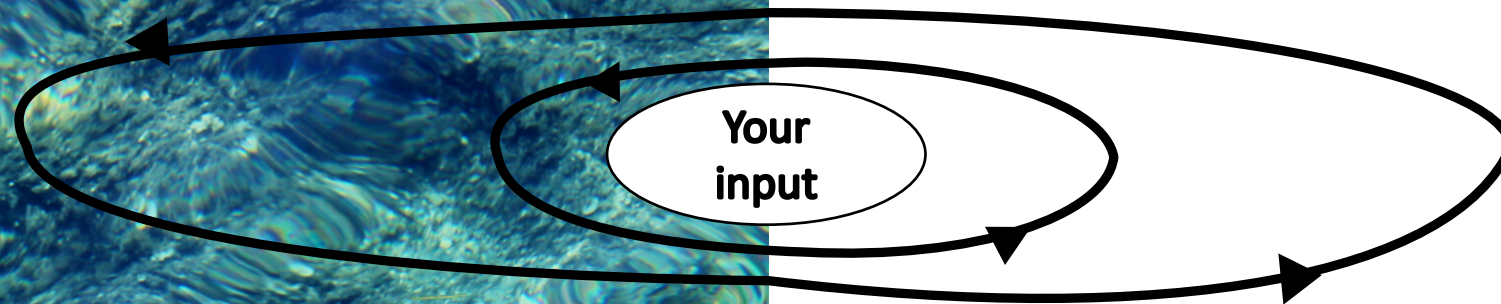
DTU Aqua (coordinator), Ifremer, AZTI, MI, COISPA, HCMR, Mindfullywired (MWC), ICES, Ti, ILVO, WMR/WEcR, SMRU, Cefas, CAU, CBG-AAU, ATHENA, UBO, Agrocampus, University of Tartu, BIOR, University of Strathclyde, CEPESCA, Politecnico di Milano, WUR

Advisory Board

Ernesto Penas-Lado, Mark Dickey Collas, Elisabetta (Bee) Morello, Javier Garat, Martin Pastoors, Antonia Leroy, Magaret (Peg) Brady, Athanassios Tsikliras, Eva Plaganyi

24
European partners and an Advisory Board with key experts

Work packages



WP1,
Knowledge
exchange and
integration

WP2:
fisheries as
social-ecological
system

WP3:
ecosystem
change ON
fish &
health

WP4:
adverse
effects OF
fishing

WP5
Spatial
components

WP6
Evaluation of
management
strategies

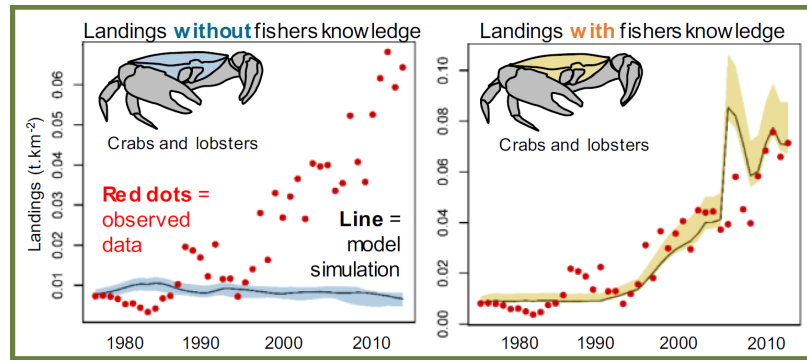
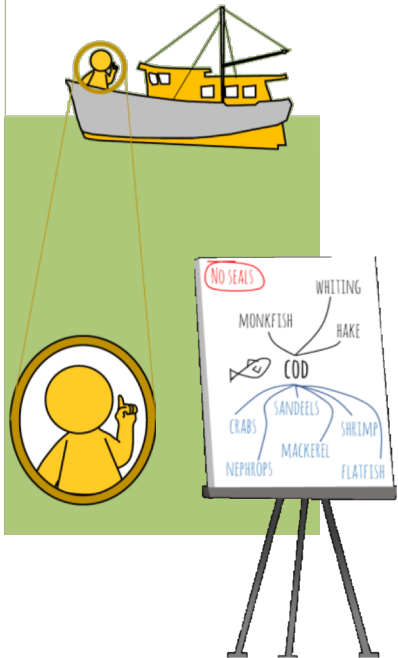
lessons learnt in WKIrish

Engage early and often

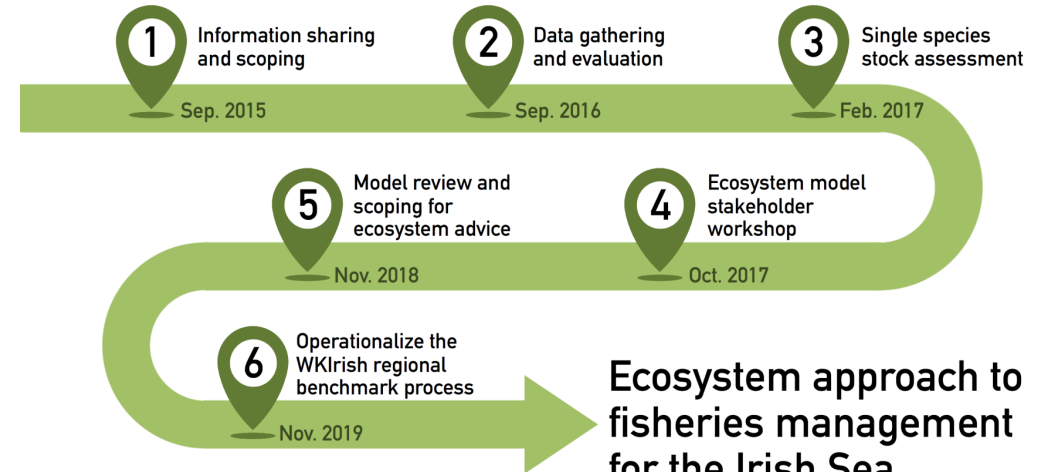


Dedicated collaboration between researchers, policy advisors, and stakeholders is needed early and often.

Fishers' knowledge



WKIrish roadmap



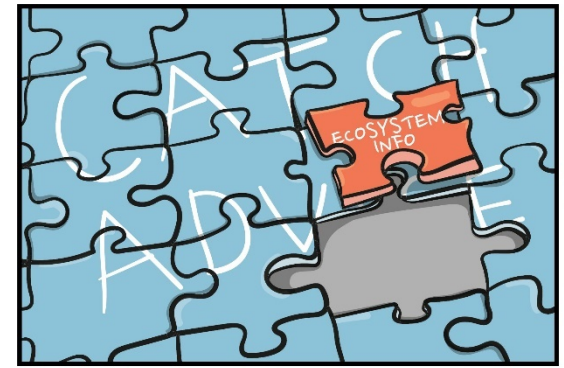
Ecosystem approach to fisheries management for the Irish Sea

lessons learnt in WKIrish

Align objectives and policy

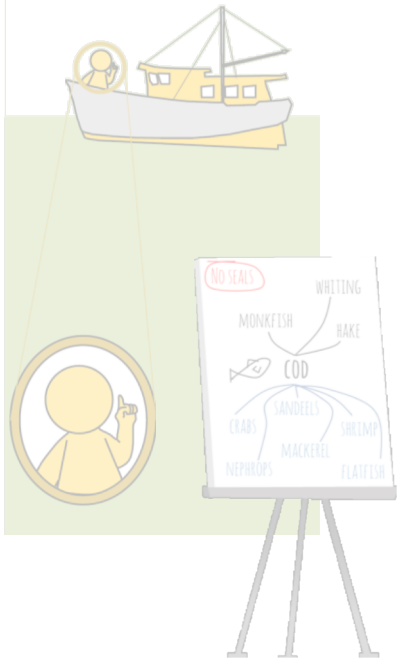


Dedicated collaboration between researchers, policy advisors, and stakeholders is needed early and often.

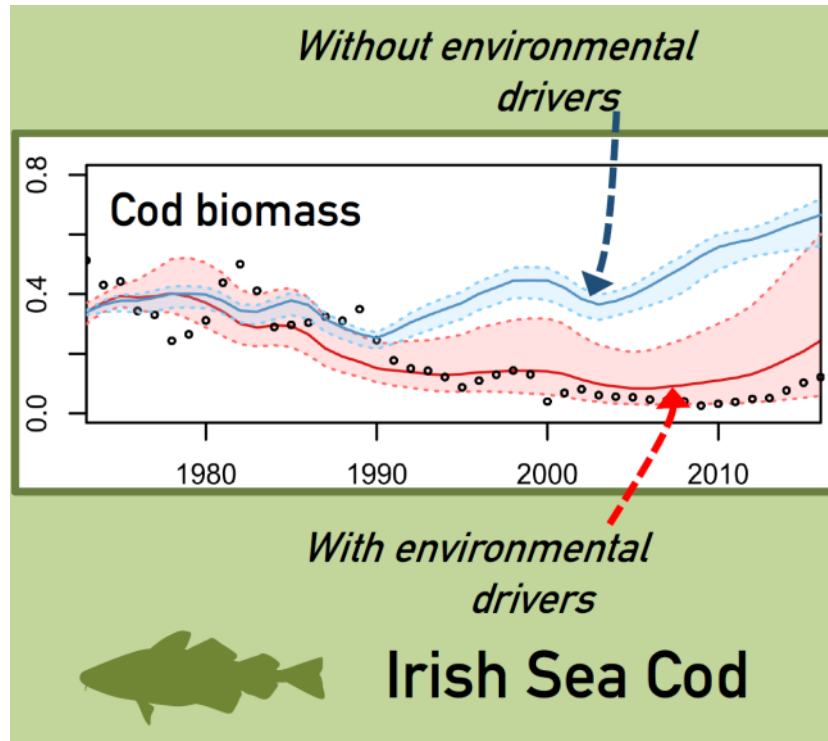


Research objectives and outputs need to be in alignment with policy questions and frameworks.

Fishers' knowledge



Ecosystem puzzle



WKIrish roadmap



Bentley et al 2021

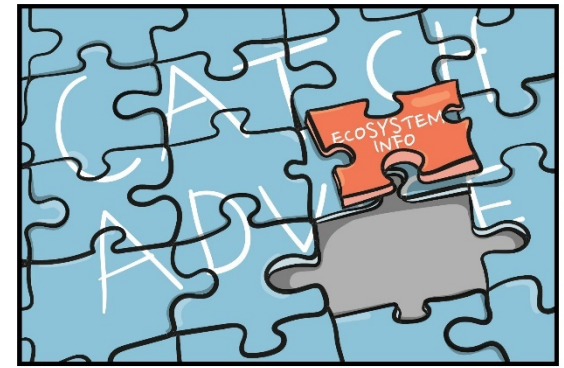
NWWAC WKIrish webinar 29th April 2021

lessons learnt in WKIrish

Align objectives and policy

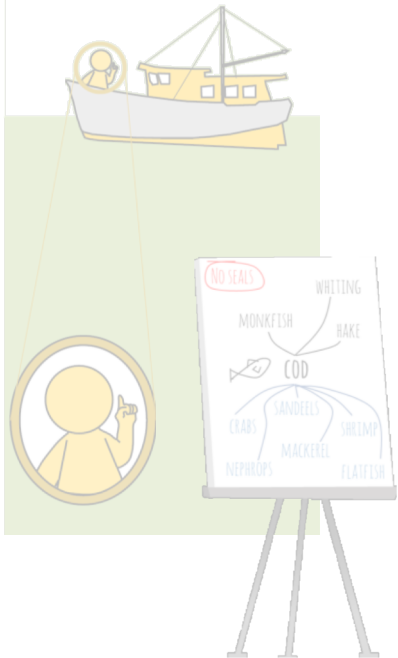


Dedicated collaboration between researchers, policy advisors, and stakeholders is needed early and often.

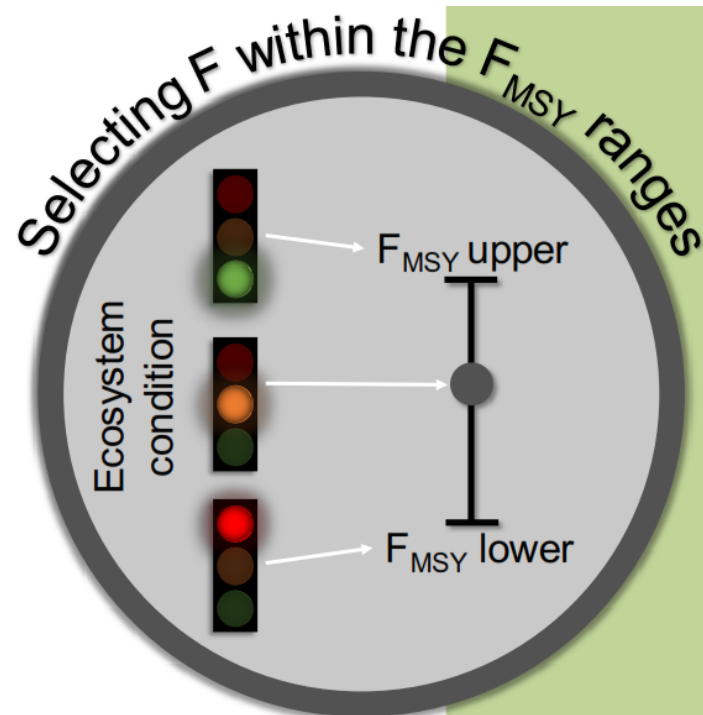


Research objectives and outputs need to be in alignment with policy questions and frameworks.

Fishers' knowledge



Feco



WKIrish roadmap



Bentley et al 2021

NWWAC WKIrish webinar 29th April 2021

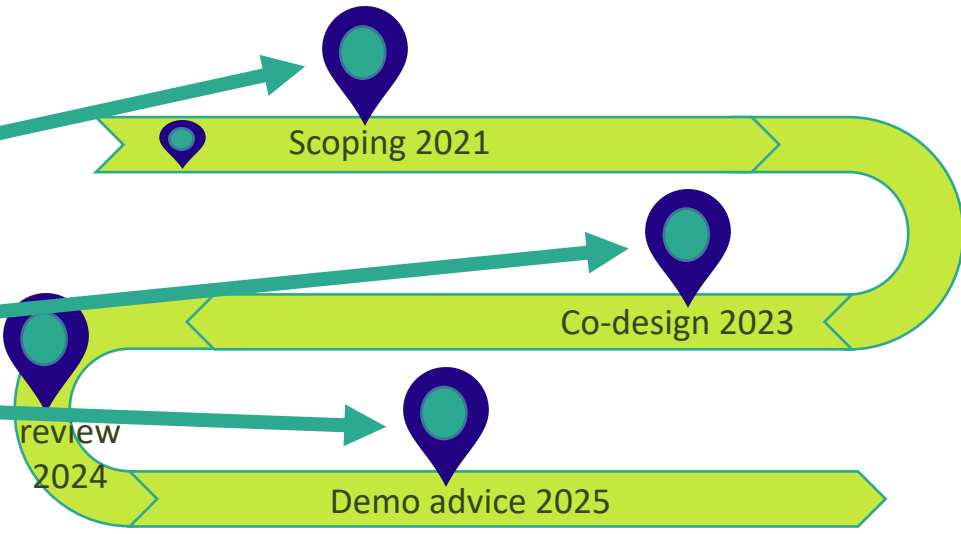
SeaWise Roadmap

Enhance benefits to fisheries while minimizing adverse ecosystem effects

*Priorities
Knowledge
Gaps*

*Operational
tool for
accurate
predictions*

*End-user
driven
advice*



What would participating in the network entail?

SEAwise network participant(s) within SWWAC are invited to the four SEAwise co-design workshops:

Autumn 2021: Stakeholder scoping of key ecosystem priorities and measures

Spring 2023: 1st presentation of management strategy evaluation results

Autumn 2024: 2nd presentation of management strategy evaluation results

Spring 2025: Synthesis and advice demonstration in Brussels

The first three of these can be organized together with you to fit your schedule and reduce travel.

We also hope you will attend the SEAwise/ICES/GFCM workshops to determine best approaches to EBFM in autumn 2023 and winter 2025.

Between these meetings, “expert advice users” are invited to comment on key priorities and formats for advice, welcome us to your meetings, attend online meetings, or participate in specific interviews.



**End-user
driven
advice**

A dynamic, collaborative network is
key to the success of SEAWISE.



And it only works if you
feel it is worth your while!





Thank you!